



# Linking Strava with environmental and weather data

Katarzyna Sila-Nowicka

*Urban Big Data Centre, Glasgow University*



An ESRC Data  
Investment

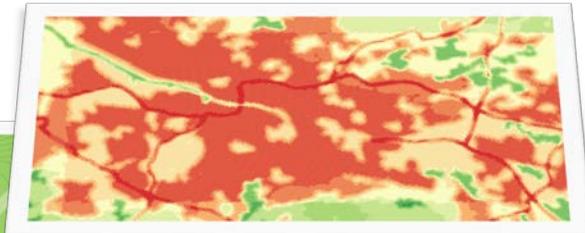


# Idea

- Does weather affect cycling behaviour?
- Is there a spatial and temporal heterogeneity in cycling activities ?



# Data



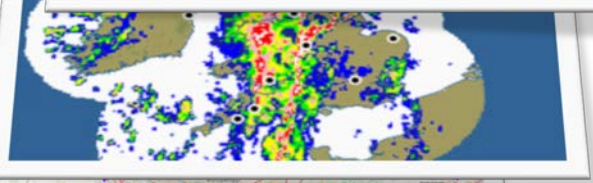
Air and noise pollution data



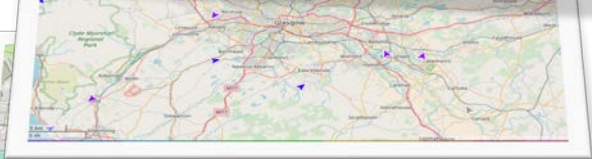
DTM from Ordnance Survey



Landuse data – Urban Atlas plus roads



Rainfall data – CEDA



Weather data – temperature, wind etc.



Strava data -  
counts of cyclists #  
at junctions

# Method

Linear regression models:

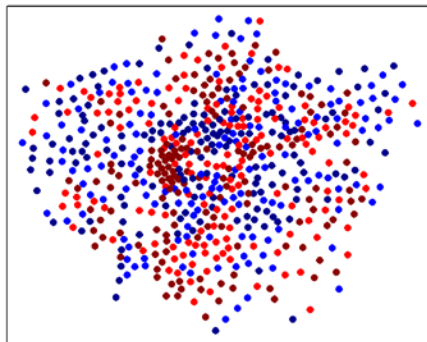
## GLOBAL

- Significant positive effect on total cycling activity of temperature and number of sunny hours
- Significant negative effects of rainfall and wind speed on total cycling activity
- Significant but much smaller positive effect of temperature and number of sunny hours on total commuting cycling activities
- Significant almost neutral effect of rain on commuting-related cycling

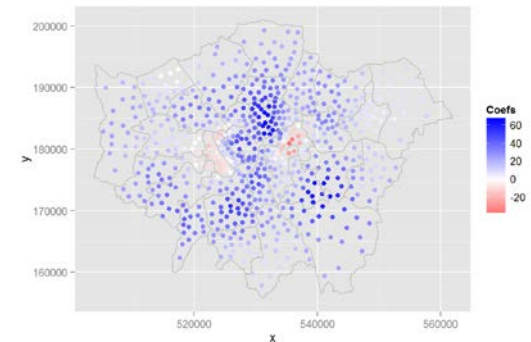
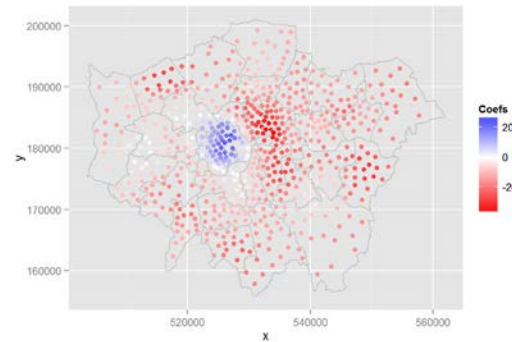
# Method

## Geographically Weighted Regression – GWR

### LOCAL



- [-116.9,-8.075]
- [-8.075,0.3997]
- [0.3997,8.377]
- [8.377,45.41]



***Thank you for your attention***



—  
An ESRC Data  
Investment  
—

***Questions ?***



@UrbanBigData



urbanbigdata



Urban  
Big  
Data  
Centre

An ESRC Data  
Investment



# Urban Big Data Centre

---

An ESRC Data  
Investment

---